

Cleanroom Systems

UltraTech Precision

High Specification, Customisable, Modular, Flush Cleanroom System



Overview



Kingspan Group



More than
50
years experience

Operations in over
70
countries across
the globe

More than
15,000
employees worldwide

Net-Zero by
2020
across all Kingspan
businesses



High-end, modular cleanroom solutions tailored to your individual project requirements, delivered seamlessly by the technology experts.

With over 50 years' experience and exciting innovations behind us, we now bring that knowledge to the sector to offer you the ultimate cleanroom solutions.

UltraTech Cleanroom Systems are backed up by exceptional 360° support from specification, technical advice, 3D representation, manufacture, installation and project handover.

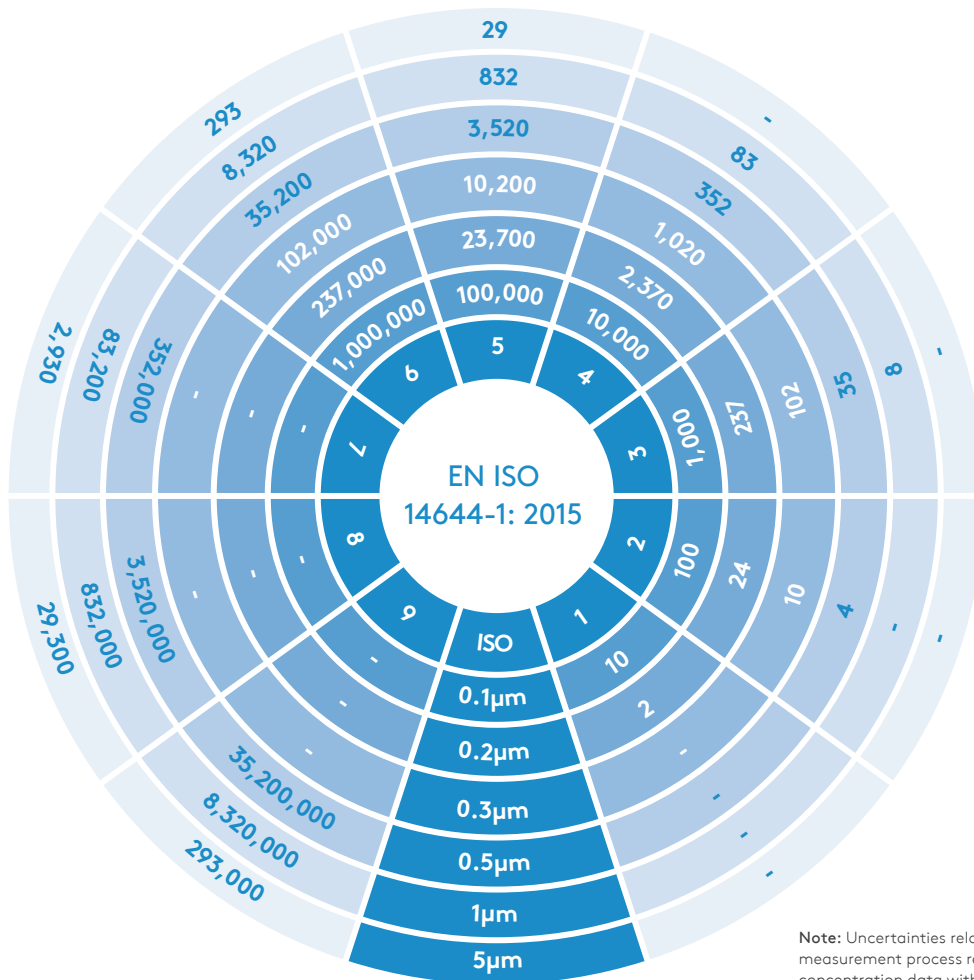
Our UltraTech Precision system features our ground-breaking QuadCore® insulation core technology, delivering superior fire, environmental and thermal lifetime performance.

Cleanroom Systems Classifications

The classification of air cleanliness is governed by the European Standard EN ISO 14644-1: 2015 – cleanrooms and associated controlled environments Part 1.

The type and classification of the cleanroom you need depends on various factors:

- Your particular industry and the specific operation that will be carried out under controlled conditions.
- The level of cleanliness required, and the condition in which that level of cleanliness has to be controlled and maintained.
- The air permeability characteristics of UltraTech Cleanroom Systems in association with other aspects of the cleanroom design and installation.



Note: Uncertainties related to the measurement process require that concentration data with no more than three significant figures be used on determining the classification level.

Maximum concentration limits (particles/m³ of air) for particles equal to and larger than the considered sizes shown above

Cleanroom Sectors Applications

There are a variety of reasons why a company needs to have a Clean Controlled Environment.

For example, you may be manufacturing a material that is easily contaminated by airborne particles, but cleanliness is only one of the aspects controlled within a cleanroom. Cleanrooms can also control temperature, humidity, sound, lighting, and vibration when necessary. The operations being conducted will determine which variables must be controlled.

Industries which commonly need cleanrooms include:



Life Science



Food Technology



Pharmaceutical



Automotive



Bio Technology



Electronics &
Semiconductor



Healthcare



Cosmetics



Medical Devices



Aerospace



AgriTech

It's all in the grey cells...

A Breakthrough in Insulated Panel Core Technology for Enhanced Performance

QuadCore® is Kingspan's new hybrid insulation core technology with a unique formulation that creates microcells with unrivalled thermal performance, superior fire protection and enhanced environmental credentials.

POWERED BY

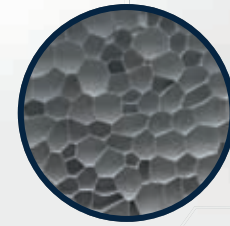
QuadCore®
TECHNOLOGY

Unrivalled Thermal
Performance

Superior Fire
Protection

Enhanced
Environmental
Performance

40 Year Warranty for
Thermal & Structural
Performance



POWERED BY
QuadCore
TECHNOLOGY



THERMALSAFE
QuadCore® is guaranteed to retain its specified thermal performance for the stated period, even if exposed to water during construction.



FIRE
Quadcore provides market leading performance in reaction to fire testing.



ECOSAFE
QuadCore® is a RedList Free core in an insulated panel with Low Global Warming Potential, with third-party verified EN 15804 EPDs on EcoPlatform and Greenbooklive.



FIBREFREE
QuadCore® is non-sensitising (does not cause skin irritation when handled) and non-hazardous.



100% RENEWABLE ENERGY
QuadCore® is manufactured in factories with 100% renewable energy including onsite-generated solar and wind energy.

Your 'End-to-end' Solutions Partner

Kingspan has over 50 years of experience in the construction industry worldwide.

Our expertise in cleanrooms allows us to meet the precise needs of your particular sector, whether that is pharmaceutical, medical, semi-conductor, biotechnology, cosmetics or high-tech.

By increasing our know-how through constant contact with our clients, we can offer you support in envelope design, providing high quality solutions based on modular panels and walkable ceilings.

Across the globe, our name is synonymous for innovation in insulated panel systems and the development of advanced insulation technologies.

Now we bring that innovation to the cleanroom sector, creating something truly unique – a range of high performance, rapid build cleanroom solutions featuring a game-changing hybrid insulation core that is radically different from anything that has gone before it: QuadCore®.

POWERED BY
QuadCore[®]
TECHNOLOGY

At Kingspan, we pride ourselves on our 360° service and support across a wide range of cleanroom applications, to provide you with the best possible customer experience.

We will be with you every step of the way, from concept to completion, and our dedicated and experienced team will support your project to give you total peace of mind.



**KNOWLEDGE
& EXPERTISE**



INNOVATION



**SERVICE &
SUPPORT**

We focus on continually delivering the best quality products.

With this in mind, all our UltraTech systems are manufactured in production facilities which are certified to: ISO 9001:2015, ISO 1400:2015, ISO 50001:2018 and OHSAS 18001:2007.

UltraTech Precision cleanroom panels comply with the appropriate standards, such as EN ISO 14644 and cGMP.

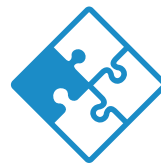


QUALITY & COMPLIANCE

Our UltraTech cleanroom solutions are designed for both flexibility and economy.

We offer customisable solutions for your specific cleanroom environment requirements and aspirations.

Designs and materials depend on the application specified and special processes which need to be incorporated.



VERSATILITY & FLEXIBILITY

With our UltraTech cleanroom solutions, installation is faster and simpler.

Our modular solution offers simple integration to provide fast and efficient installation.



BUILD SPEED & SIMPLICITY

One of the most important considerations in an effective cleanroom environment is the quality and design of the cleanroom structure itself. Turn to Kingspan to give you the solution you need.

The Flexibility to Customise

The UltraTech range offers flexible, high performance, engineered cleanroom solutions that deliver both cost and operational benefits, minimising risk and maximising return on investment.



High Performance Core Materials

UltraTech Precision is a conventional flush modular system for specialist cleanroom applications.

With a choice of three core options - QuadCore®, Mineral Fibre Core and Aluminium Honeycomb - UltraTech Precision is suitable for cleanrooms with a wide range of performance requirements.

POWERED BY
QuadCore®
TECHNOLOGY

Cleanroom Systems

UltraTech Precision

UltraTech Precision is a customisable, modular flush cleanroom system that features a demountable joint with an aluminium extrusion to all sides.

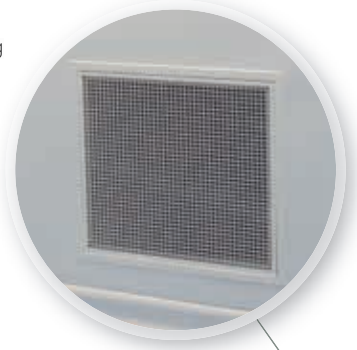
UltraTech Precision is suitable for specialist cleanroom applications that demand specific core performance or compliance.

Why choose UltraTech Precision?

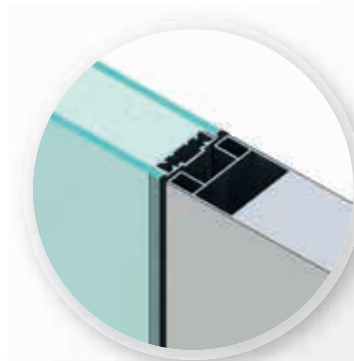
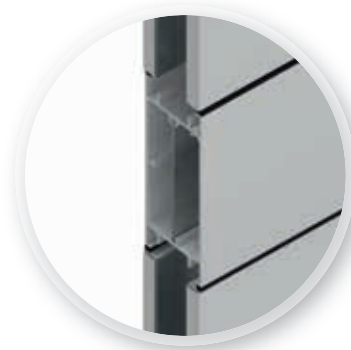
- cGMP compliant
- Choice of cores – QuadCore®, Mineral Fibre core or Aluminium Honeycomb
- Wide range of CLEANsafe coating systems
- Ultra airtight system
- Available in both 60mm and 80mm thicknesses providing superior load bearing capacity and stability
- Flexibility – variable widths to suit layout
- 60mm panel joint features an optional service cavity for incorporation of services
- Integrated envelope solution – doors, windows, corners, floor tracks and other components



Factory cut opening
(grille by others)



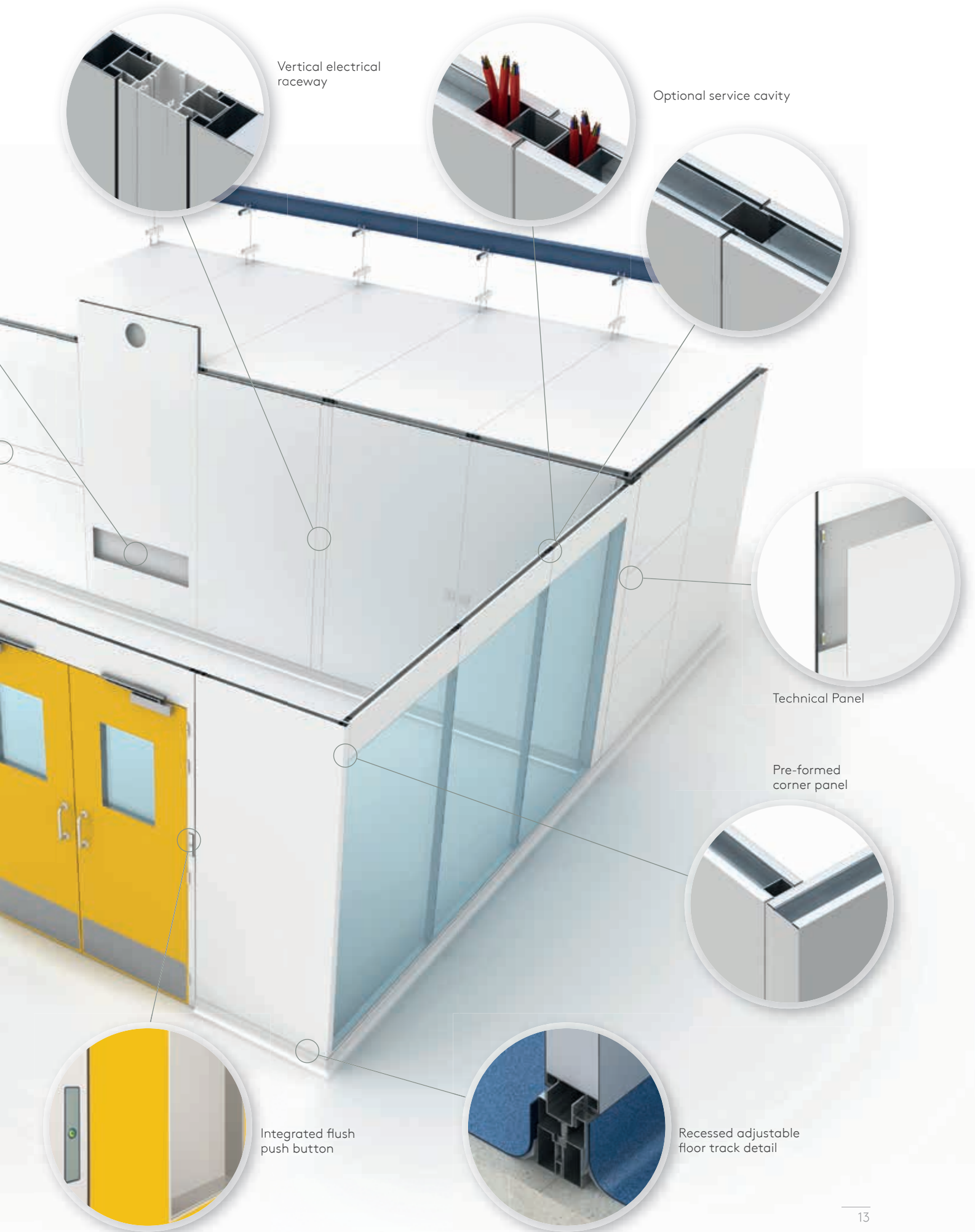
Precision integrated
service conduit



Precision integrated
window detail



Precision integrated door
detail (viewed from inside)



Vertical electrical raceway

Optional service cavity

Technical Panel

Pre-formed corner panel

Integrated flush push button

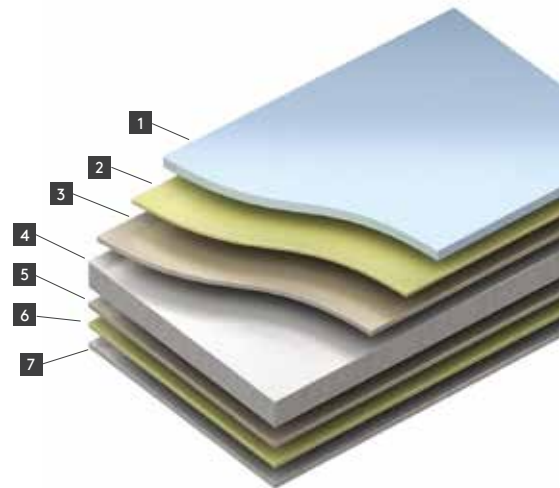
Recessed adjustable floor track detail

High Performance Coatings Internal Applications

Kingspan CLEANsafe 15

Kingspan CLEANsafe 15 is a chemically inert polyester (PE) coating, applied to pre-treated metal, suitable for non-aggressive internal environments.

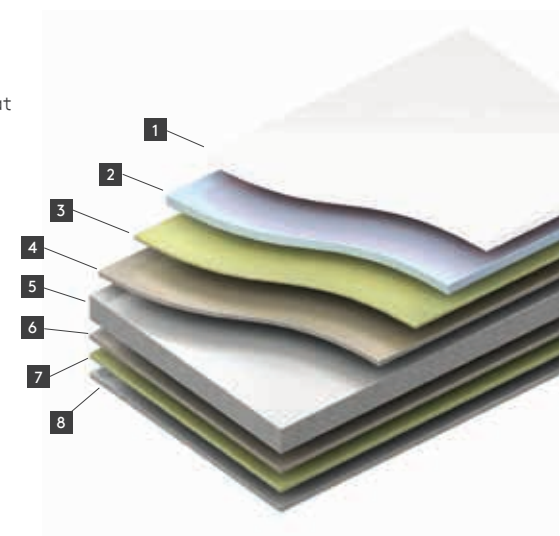
- 1 Top coat
- 2 Pre-treatment
- 3 Metallic protection
- 4 Metal substrate
- 5 Metallic protection
- 6 Pre-treatment
- 7 Back coat



Kingspan CLEANsafe 25

Kingspan CLEANsafe 25 is a chemically inert polyester (PE) coating, applied to pretreated metal, suitable for moderately aggressive internal environments.

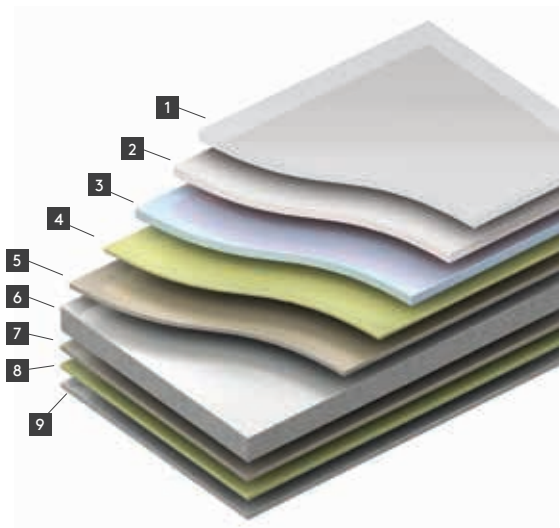
- 1 25µm polyester top coat
- 2 Primer
- 3 Pre-treatment
- 4 Metallic protection
- 5 Metal substrate
- 6 Metallic protection
- 7 Pre-treatment
- 8 Back coat



Kingspan CLEANsafe 55

Kingspan CLEANsafe 55 is a chemically inert colaminated polyethylene terephthalate (PET) film and polyester (PE) paint, applied to pre-treated metal, suitable for humid and chemically aggressive internal environments.

- 1 55µm PET film
- 2 Polyester
- 3 Primer
- 4 Pre-treatment
- 5 Metallic protection
- 6 Metal substrate
- 7 Metallic protection
- 8 Pre-treatment
- 9 Back coat



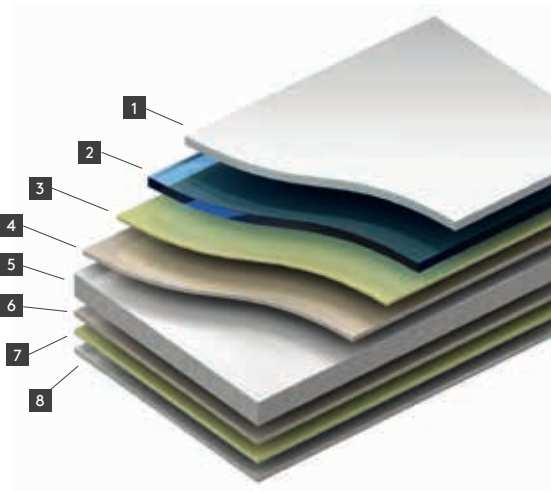
High Performance Coatings Internal Applications

Kingspan CLEANsafe 120

Kingspan CLEANsafe 120 is a chemically inert polyvinyl chloride (PVC) film, laminated to pre-treated metal, suitable for internal for controlled environments.

Joints between panels can be either caulked or chemically cold-welded.

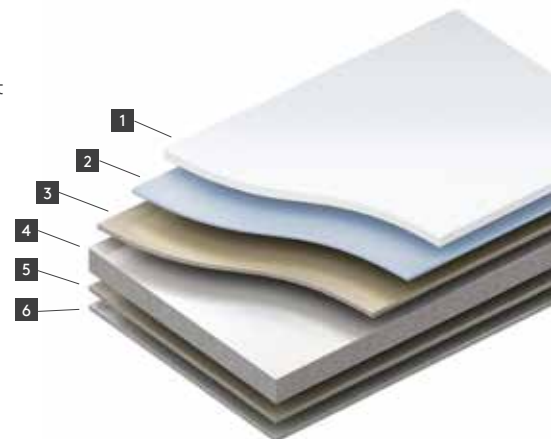
- 1 120µm PVC film
- 2 Adhesive
- 3 Pre-treatment
- 4 Metallic protection
- 5 Metal substrate
- 6 Metallic protection
- 7 Pre-treatment
- 8 Back coat



Kingspan CLEANsafe Anti-Static 25

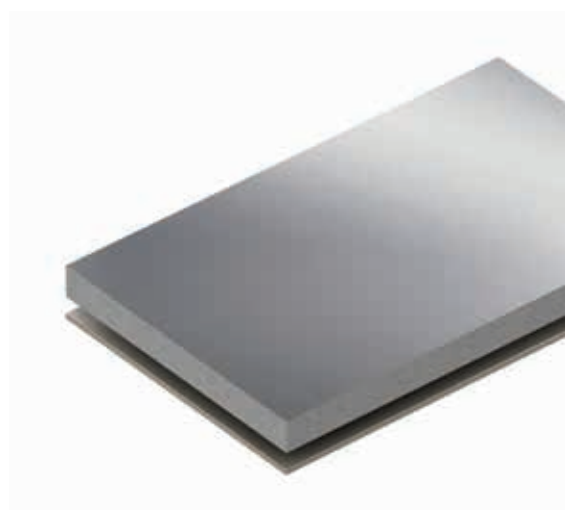
Kingspan CLEANsafe Anti-static 25 is a chemically inert polyester (PE) coating with a surface resistivity of 1 to 300 x 10⁶Ω/square, applied to pre-treated metal, suitable for moderately aggressive internal environments.

- 1 25µm polyester top coat
- 2 Primer
- 3 Metallic protection
- 4 Metal substrate
- 5 Metallic protection
- 6 Back coat



Kingspan CLEANsafe Stainless steel 316L

Kingspan CLEANsafe Stainless steel 316L is a chemically inert, gap-free austenitic stainless steel, specifically designed for conditioned environments and environments with a high corrosion factor.



360° Service & Support

With you all the way.

Our dedicated and experienced team can deliver a full service for a wide range of cleanroom applications.

With you from the outset, we will offer support on all necessary aspects of your cleanroom project, from conception, through installation, to completion and handover.

Technical Support

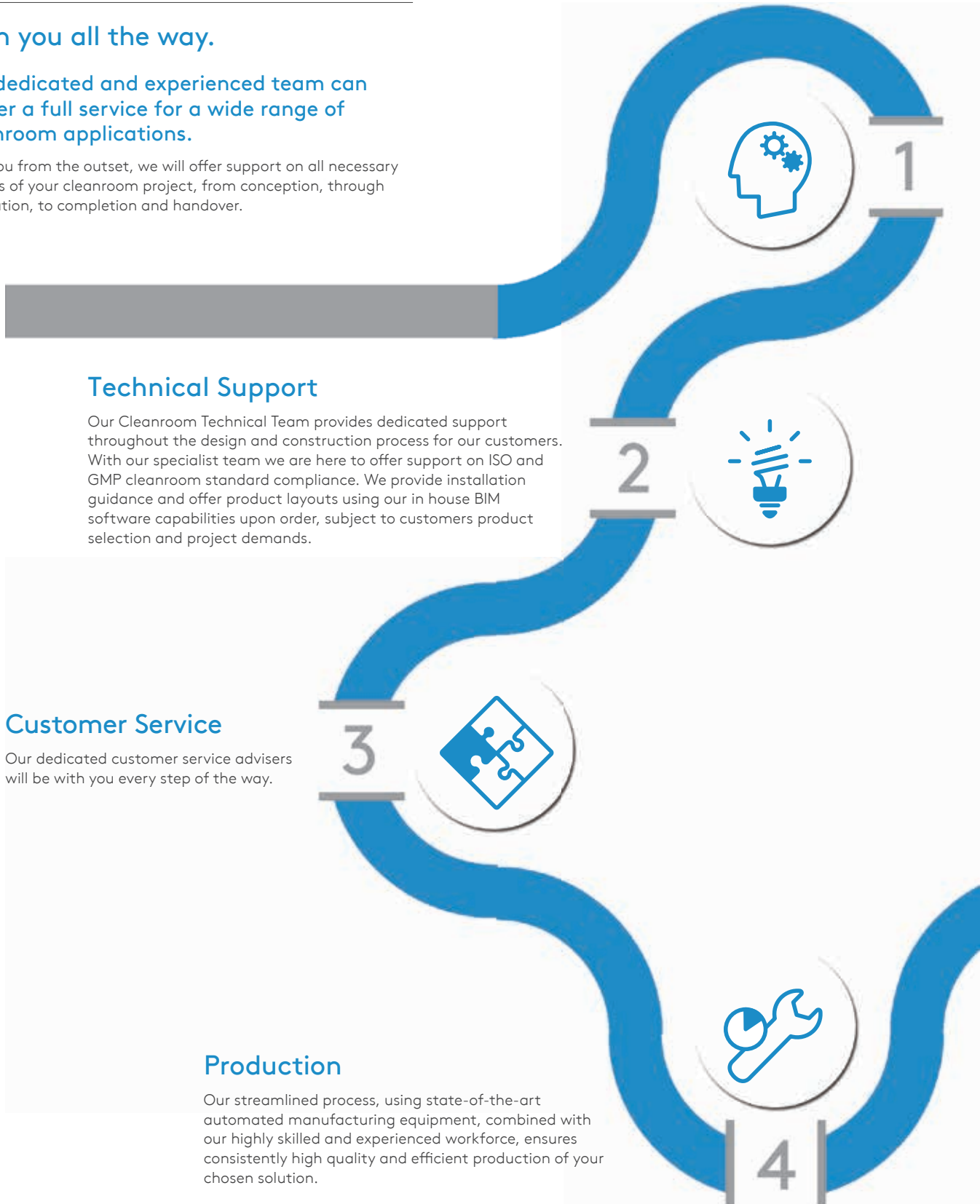
Our Cleanroom Technical Team provides dedicated support throughout the design and construction process for our customers. With our specialist team we are here to offer support on ISO and GMP cleanroom standard compliance. We provide installation guidance and offer product layouts using our in house BIM software capabilities upon order, subject to customers product selection and project demands.

Customer Service

Our dedicated customer service advisers will be with you every step of the way.

Production

Our streamlined process, using state-of-the-art automated manufacturing equipment, combined with our highly skilled and experienced workforce, ensures consistently high quality and efficient production of your chosen solution.



Specification

Our specialist Cleanroom Sales Team are here to support you with the appropriate selection and specification of our comprehensive product range, providing quotations and cost support.

Warranty

Our service continues on after the project is complete. With proven performance, backed by our Kingspan System warranty, you can rest assured you have chosen the ultimate cleanroom solution.

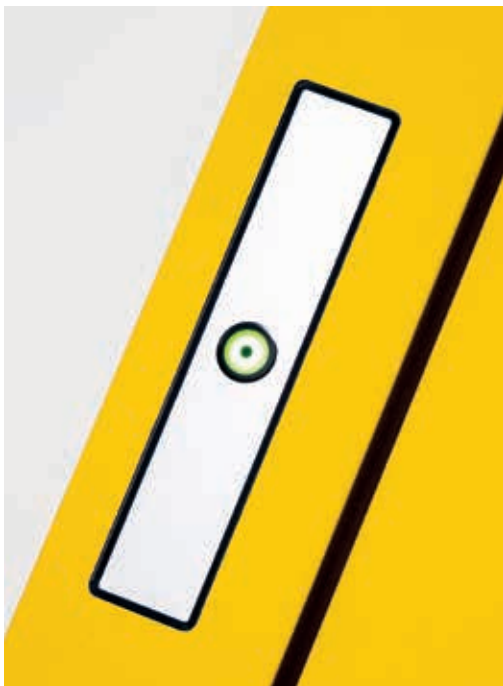


Cleanroom Systems Features



Our high quality, innovative UltraTech cleanroom solutions are ideal for a wide range of sectors.

Contact our dedicated team to find out how we could help you.



UltraTech Precision is a unique cleanroom system that provides complete design flexibility and high performance combined with unparalleled cost-efficiency.



Case studies



- ISO class 7
- Dimensions: ca. 250 m² (24m x 10.5m) x 3m int. height



- ISO class 7
- Dimensions: ca. 110 m² (10m x 11m) x 3m int. height

Case studies



LOA | FULL
SURFACE
GROUP

- ISO class 6 / 7
- Dimensions: ca. 130 m² (10m x 13m) x 3m int. height



BKL
Engineering

- ISO class 8
- Dimensions: ca. 540 m² (18m x 30m) x 4.65m int. height

Case studies



iai industrial systems
part of HID Global

- ISO class 7
- Dimensions: ca. 85 m² (13m x 6.5m) x 2.9m int. height



VACUTECH
VACUUM EN PRECISIE TECHNOLOGIE

- ISO class 7
- Dimensions: ca. 110 m² (10m x 11m) x 3m int. height

Contact Details



PROCLEANROOM

BUILD YOUR EXPERTISE

ProCleanroom

Meerheide 231
5521 DX Eersel
The Netherlands

T: +31 (0)40 400 28 74
E: info@procleanroom.com

